

State of Wyoming Corner Record

(In compliance with the **CORNER PERPETUATION AND FILING ACT**, Wyoming Statutes, 1997 Section 33-29-140 et. seq., and the Rules and Regulations of the Board of Professional Engineers and Professional Land Surveyors)

Reverse side of this form may be used if more space is needed.

Record of original survey and citation of source of historical information (if corner is lost or obliterated). Description of corner monumentation evidence found and/or monument and accessories established to perpetuate the location of this corner. Sketch of relative location of monument, accessories, and reference points with course and distance to adjacent corner(s) (if determined in this survey). Method and rationale for reestablishment of lost or obliterated corner.

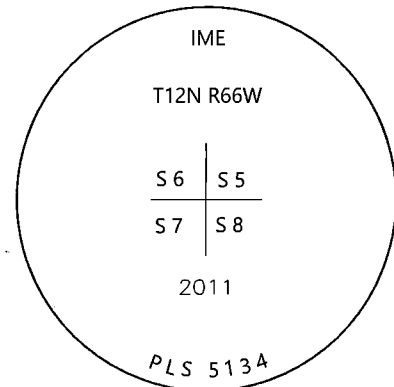
LOCATION: Northeast Corner of Section 7, T12N, R66W, 6th Principal Meridian, Laramie County.

RECORD: GLO - Set a stone 18"x14"x11"

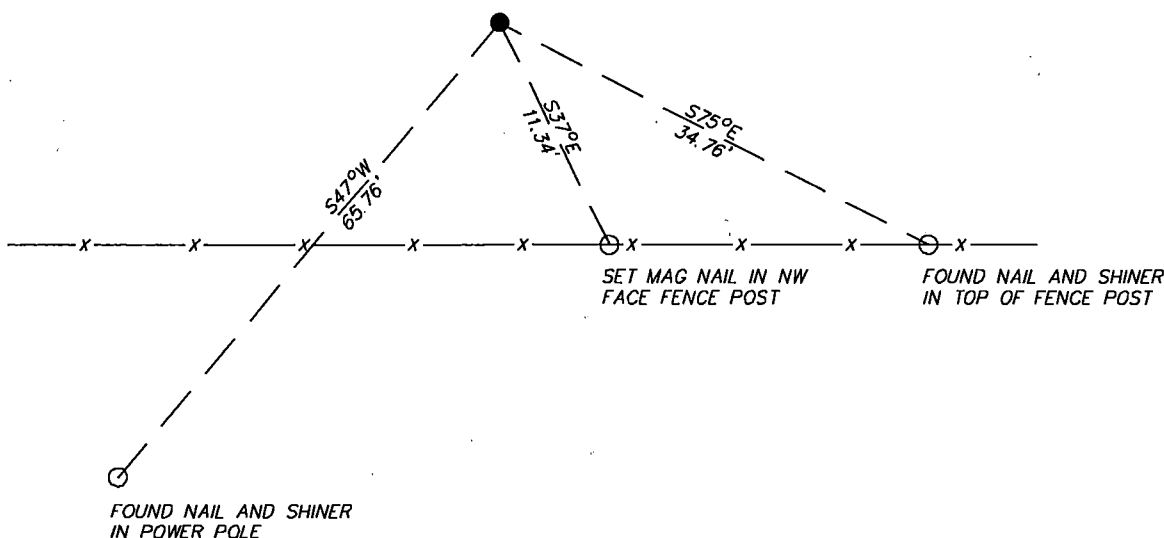
2011 - Randall Stelzner, LS 5134, filed a corner record noting that a 10"x4"x6" stone, with 5 scribed marks, was found loose. Replaced stone with 5/8"x24" rebar, with a 2.5" aluminum cap. Stone was buried on south side of monument.

RECOVERED: 2019 - Westwood crew searched the area and found a 2.5" aluminum capped monument, LS 5134, at the surface. Two ties were found.

RESET: Accepting location of the monument as the location of the corner. One additional tie was set as shown.



Monument Inscription



Date of Field Work: 9/10/2019

Office Reference: 22237.01

Cross Index Plat

	1	2	3	4	5	6	7	8	9	10	11	12	13	14	15	16	17	18	19	20	21	22	23	24	25		
A																											A
B																											B
C				6			5				4				3					2							C
D																											D
E																											E
F																											F
G																											G
H																											H
J																											J
K																											K
L																											L
M																											M
N																											N
O																											O
P																											P
Q																											Q
R																											R
S																											S
T																											T
U																											U
V																											V
W																											W
X																											X
Y																											Y
Z																											Z
	1	2	3	4	5	6	7	8	9	10	11	12	13	14	15	16	17	18	19	20	21	22	23	24	25		

Firm/Agency, Address

Westwood Professional Services
 3701 12th St. N. Ste. 206
 St. Cloud, MN 56303

Telephone Number: (320)-253-9495

This corner record was prepared by me or under my direction and supervision.

SEAL & SIGNATURE



REC'D #: 775792
 RECORDED 4/15/2020 AT 10:13 AM BK# 2668 PG# 224
 Debra K. Lee, CLERK OF LARAMIE COUNTY, WY PAGE 1 OF 1

Corner Name Northeast Corner Section 7, T 12 N, R 66 W, 6th P.M.

Cross-Index No.: E-5

County: Laramie Wyoming

SBRPEPLS/PLSW: March 1994; PLSW January 1998